

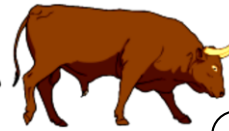
Is it safe to pet animals on a farm?

When visiting a petting farm, the animals are in an area designed for visitors and it is ok for you to pet them. However most farms are working farms and animals on such farms are not suitable for you to approach.



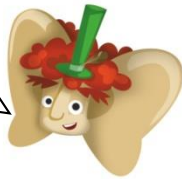
If you don't know the animal wait for a grown up

Rams (male sheep) can be very cross and have a tremendously powerful head butt that can seriously injure you.



Bulls can be extremely cross and very dangerous. They will charge at you.

Even the quietest and most placid animals can be dangerous.

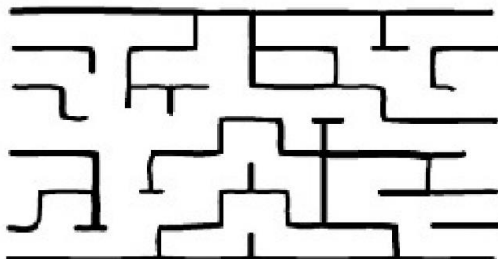
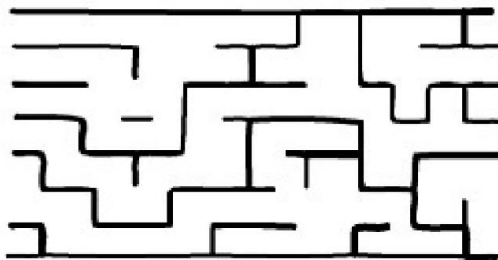
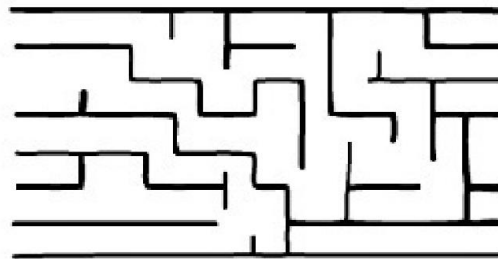


Never approach an animal guarding its young, no matter how cute and adorable the young animals may be.

No matter how quiet an animal is, if an animal is injured they may kick, bite or bolt even if they are startled.

Many farm animals can be dangerous if they are protecting their young.

Can you help the animals on Riverside Farm get back to their fields?



These children are playing in a field they shouldn't be playing in.
Can you help them see where the dangers are?



THE RULE OF GATES
If a gate is closed when you get to it, close it after you. If the gate was open when you got to it leave it open.

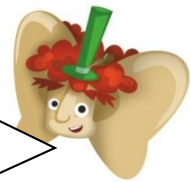
CAUTION ELECTRIC FENCE
If the fence has wooden posts, with wires going between the posts it's probably an electric fence.



Can animals talk?

Every animal has their own personality just like we do.

Animals don't speak like humans but they can tell you when they're happy or angry through their body language.



NEVER PLAY ANYWHERE NEAR FARM ANIMALS.
Never climb a fence to get to an animal. Never make sudden moves, or loud noises around animals. If you're bringing your pet dog to a farm only do so with permission and keep it on a lead at all times. Always wash your hands if you do pet any animals.

For more information please visit: www.agrikids.ie