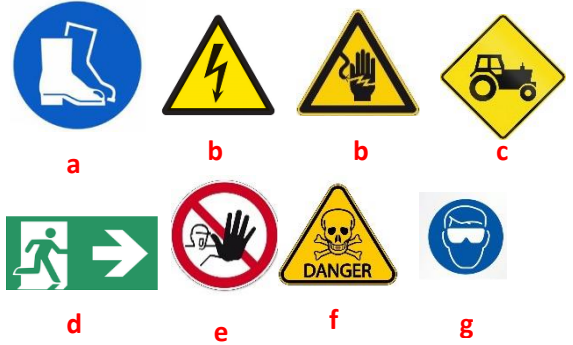




AgriKids Webinar Quiz - Answers Senior

1. Draw the sign for the following statements:

- You must wear boots
- Electric fence
- Moving machinery
- Exit this way
- No entry
- Chemicals
- You must wear eye protection



2. Horses

- Look at these horses, what are their ears telling us about how they feel?



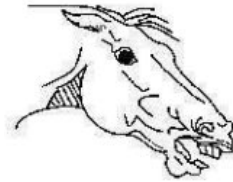
Forward ears
Attentive/Interested/happy



Twisting ears:
Listening



Drooping ears:
resting / sleeping



Pinned back ears.
Aggressive/ scared/
nervous

- Where is it safe and unsafe to approach a horse?

Give a reason for your answer.

It is not safe to approach a horse directly in front or from behind. These are the blind spots. From the front you can startle them and from the rear you are entering the kick zone and could be kicked as the horse's instinct is to defend itself.

3. Bulls and Cows

- What are the common signs of an aggressive bull (circle your answers)

Grazing

Tossing head

Blinking

Scraping ground

Bellowing

- How can farmers stay safe when handling bulls?

- Fitting a nose ring from 9/10 mths
- Entering field in a covered vehicle
- Not working alone with bulls
- If a bull acts dangerous, remove them from the farm.

- When and why might a cow be considered highly dangerous?

Just after calving and during the calving process. Cows can be protective for some time after too, so farmers must ALWAYS remain vigilant and never turn their backs.

- What can farmers do to make sure they are safe when dealing with such a cow?

Never be in the pen with a loose freshly calved cow. Place cow in a crush to keep her secure, release her once farmer has left the pen. Using a calving gate keeps a barrier between the farmer and the cow.

4. Slurry:

- What is slurry made of and why do farmers use it?

Slurry is a mixture of animal poo and urine. Most commonly cows, Pig and chicken slurry is also used as a fertiliser and to help grass grow.

- b. Mixing slurry is also called: **AGITATION**
- c. When mixing slurry the first **30 Minutes** is the most dangerous. (Circle the right answer)

Give a reason for your answer:

After storing the slurry for the winter months there is a build-up poisonous Hydrogen Sulphide gas. When agitation starts this gas is release at once making the first 30 minutes the most dangerous time for farmers working with slurry.

- d. When mixing slurry farmers should:
- Stand beside the agitator looking in
 - Keep away from the area for up to one hour**
 - Stand beside the tank to make sure agitator is working

5. Tractors

Write down your answers to the following:

- Why can tractors be so dangerous?
- What can farmers do to be safer when using them and how should everyone behave around tractors?
- What is significant about these ages when talking about tractors: 7yrs, 14yrs and 16yrs?

Ans: 7yrs: age allowed to be a passenger in a tractor as long as there is a passenger seat and seat belt.

14yrs: with a licence and training you can drive a tractor within the farm only.

16yrs: with a licence and training you can drive a tractor on the road (*RoI only)

- d. Tractor blind spots

Ans: See pictures



6. Quad Quiz

- a. To operate a quad on a farm you must be: 6 **16** 60
- b. What does ATV stand for? **All-Terrain Vehicle**
- c. Can farmers carry passengers on a quad: **No, quads are not for carrying passengers, one seat, one user!**

Give a reason for your answer:

Quad users need the length of the seat so they can move their weight and position forward and back. forward going up a hill and back going down a hill. This helps to balance the quad and prevent it from flipping over.

- d. What PPE should farmers wear when using a quad?

- **Helmet with visor**
- **Gloves for grip**
- **Long sleeves - protect elbows**
- **Long trousers – protect knees**
- **Shoes with grip**
- **Sunglasses**

